



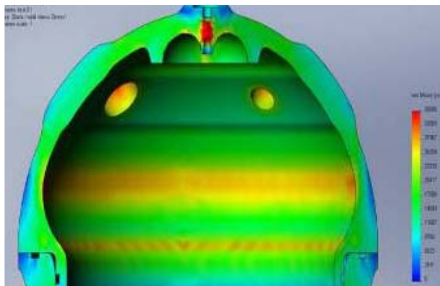
# **Bluefin Robotics Overview**

Dr. Christopher Wallsmith, CTO

September 24, 2009

- Full-service Autonomous Underwater Vehicle (AUV) provider located in Cambridge, MA
- Spun-out from MIT AUV Lab in 1997
- Acquired by Battelle in 2005
- 80+ person firm leveraging strengths of 20 years of experience in ocean engineering and robotics

## Research & Development



## Production



## Operations Support



## Testing



## Training



## BF Series

### BF-9

Diameter **9in** Length **65in** Weight **130lb**  
D.Rating **200m** Endurance **12hr**



### BF-12

Diameter **12.75in** Length **90-166in**  
Weight **250-525lb**  
D.Rating **200m, 1500m**  
Endurance **up to 44hr**



### BF-21

Diameter **21in** Length **130-186in**  
Weight **730-1600lb**  
D.Rating **200m, 3000m**  
Endurance **up to 44hr**

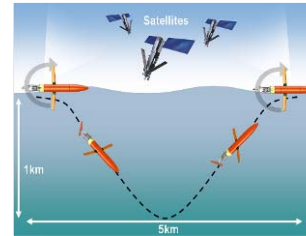


Free-flooded & Modular | Rapid Turnaround | Multi-Payload

## Spray Glider



Diameter **8in** Length **80in**  
Weight **115lb**  
D.Rating **1500m**  
Endurance **up to 6 months**

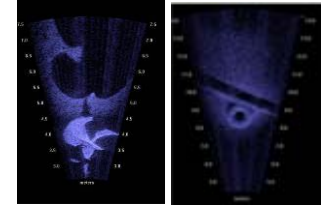


Deep-rated | Pumped Sensors | Extended Deployments

## Hovering AUV



Diameter **41 x 40 x 25 in**  
Weight **170lb**  
D.Rating **60m**  
Endurance **>3hr**



Hi-Res Imagery | Precise Control | Real-time Comms



## COMMERCIAL

- Deep Water Survey
- Pipeline & Engineering Survey
- Ocean Floor Mapping
- Environmental Monitoring

## SECURITY

- Mine Countermeasures (MCM)
- Intelligence, Surveillance & Reconnaissance (ISR)
- Port and Harbor Security
- Rapid Environmental Assessment
- Ship Hull Inspection

## ACADEMIC

- Oceanography
- Fishery Assessment
- Archaeology
- Research & Development Platform

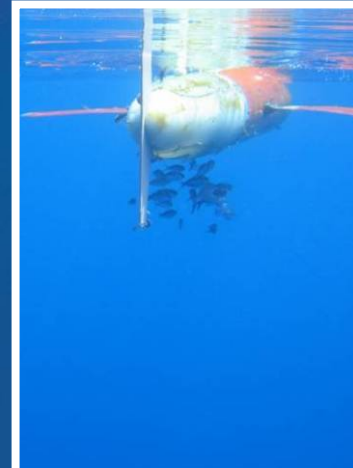
# BF-Series Survey Vehicles for Deployment



	<b>Bluefin-9</b>	<b>Bluefin-12</b>	<b>Bluefin-21</b>
Max Depth Rating (m)	200	1500	6000
Max Payload Power (W)	15	400	800
Max Payload Volume (cu in)	150	400	12,000
Range per Mission (km)	60-70	15-350	35-300



# Deep Down, You Want Bluefin.



## BLUEFIN ROBOTICS CORPORATION

237 Putnam Avenue

Cambridge, MA 02139

United States

Main: (+1) 617 715 7000

Fax: (+1) 617 498 0067

[info@bluefinrobotics.com](mailto:info@bluefinrobotics.com)



